

Attachment 1 - Crown Land Reserves – Table of Descriptions and Maps

Reserve No	Lots	Known As	Purpose	Guidance LG Act Category*	WSC Suggested Classification and Categorisation	Considerations/Justification* *if WSC classification/categorisation differs from Guidance category
85378	Lot 102 DP 753366 & Lot 111 DP 728777	BANDULLA RUBBISH DEPOT	Rubbish Depot	General Community Use	<u>Operational</u>	Bandulla's Rubbish Depot remains active and is currently used as a waste transfer station. Despite its current less intensive use, contamination may remain on this site and as such, classifying the site operational best suits this reserve for reasons of safety and public health. *Reserve Map 1
86971	Lot 195 DP 750246	RUBBISH DEPOT (closed in 2004)	Rubbish Depot	General Community Use	<u>Operational</u>	Upon closure of this rubbish depot, contamination may remain. Due to this, operational classification is recommended to ensure the site is kept secure for reasons of public health and safety. *Reserve Map 2
89960	Lot 183 DP 750246	RESERVE BARADINE	Public Recreation	Park	<u>Community Park</u>	Guidance category appropriate. Plant Community Type (PCT) 399 exists on site: Not associated with Threatened Ecological Communities (TECs). Guidance category appropriate. *Reserve Map 3
120056	Lot 219 DP 720282	BARADINE BUSHFIRE BRIGADE & RESCUE STATION	Fire Brigade - Rescue Station	General Community Use	<u>Operational</u>	This reserve is currently used for the SES and RFS for emergency purposes. The reserve is dominated by an emergency services shed - vehicles and equipment which must be kept in a secure premises. As such, the reserve serves its dedicated purpose but is not truly open to the public. Operational best suits this reserve's classification. *Reserve Map 4
68452	Lots 7300-7302 DP 1139960	BARADINE RECREATION AND CAMPING	Camping/ Public Recreation/ Resting Place	General Community Use/Park	<u>Community General Community Use</u>	Current use is vacant passive Creekside camping area on northern side of Baradine. Guidance category appropriate. PCT 398 & 401: Not associated with TECs* *Reserve Map 5
120110	Lot 26	RIFLE RANGE	Environment	Natural Area	<u>Operational</u>	Current use is for an <u>operational</u> rifle



Attachment 1 - Crown Land Reserves – Table of Descriptions and Maps

	DP 753384, Lot 7004 DP 1117467, Lot 7011 DP 1032415		al Protection			range. As the rifle range is in use and additional approvals are required to be maintained at such a site, security at the site is paramount. Operational is therefore most appropriate. *Reserve Map 6
65440	Lots 102 & 131 DP 754959	BINNAWAY SHOWGROUND	Showground	General Community Use	<u>Community</u> General Community Use	Currently utilised by a Showground Committee. Guidance category appropriate. No PCT identified on site. *Reserve Map 7
90694	Lots 7008- 7009 DP 1032352	GREENBAH CREEK RECREATION	Public Recreation	Park	<u>Community</u> - Park	Guidance category appropriate. PCT 81, 84, 281* on site. 81 & 281 associated with TEC*. This can be managed through PoM process as this site is not subject to threat abatement plans or listings for threatened species. *Reserve Map 8
36127	Lot 89 DP 755476	PRESERVATION OF GRAVES	Preservatio n of graves	Area of Cultural Significance	<u>Community</u> - Area of Cultural Significance	This reserve remains set aside for the preservation of graves. Area of Cultural Significance is most appropriate. Site recorded in SHI database for heritage areas (however not listed in LEP). *Reserve Map 9
31715	Lot 701 DP 1028248	QUEENSBOROUGH PARK	Public Recreation	Park	<u>Community</u> - Park	This Park in Coolah is an open passive park with scattered trees. No PCT identified on this cleared site. Guidance category appropriate. *Reserve Map 10
44862	Lot 74 DP 754966	NIGHT SOIL DEPOT	Night Soil Depot	General Community Use	<u>Operational</u>	This reserve was used as a night soil depot in the past. Without surety of contamination clearance, it is in the public interest that this reserve be classified operational. This reserve is closed to the public for the above reason. *Reserve Map 11
51177	Lot 7027 DP 1061329	QUEENSBOROUGH PARK WEST	Public Recreation	Park	<u>Community</u> - Park	Guidance category appropriate for this passive recreation area. No PCT identified on this cleared site. *Reserve Map 12
51266	Lot 83 DP 754966	COOLAH WASTE TRANSFER DEPOT	Rubbish Depot - Sanitary Purposes	General Community Use	<u>Operational</u>	This reserve, having been used as a rubbish depot in the past and without surety of potential for contamination or otherwise, it is in the public interest that this reserve



Attachment 1 - Crown Land Reserves – Table of Descriptions and Maps

						be classified operational. This reserve is closed to the public for the above reason. *Reserve Map 13
65210	Lot 123 DP 44929	COOLAH NIGHT SOIL DEPOT	Addition - Rubbish Depot - Sanitary	General Community Use	<u>Operational</u>	This reserve, having been used as a night soil and rubbish depot in the past and clearance of potential for contamination, it is in the public interest that this reserve be classified operational. This reserve is closed to the public for the above reason. *Reserve Map 14
81773	Lot 701 DP 1028247	JORROCK'S PARK	Resting Place	General Community Use	<u>Community - General Community Use</u>	Guidance category appropriate. Registered as an Off leash area under Companion Animals Act. No PCT identified on this passive cleared site. *Reserve Map 15
83250	Lot 701 DP 1016659	THREE CORNER PARK	Public Recreation	Park	<u>Community - Park</u>	Guidance category appropriate. Currently a passive open space area. No PCT identified on this cleared site. *Reserve Map 16
11	Lot 7028 DP 1061329	QUEENSBOROUGH PARK, COOLAH	Park	Park	<u>Community - Park</u>	This is a substantially cleared park in Coolah with a PCT of 468* on site. No TECs are associated with this PCT. One AHIMS site registered on this lot. A licence for grazing currently exists on this reserve. Categorisation of Park remains appropriate with AHIMS items and licence occupancies able to be protected and dealt with in PoM. *Reserve Map 17
14138	Lot 7033 DP 1002144	RIFLE RANGE	Public Recreation	Park	<u>Community - Park</u>	This Reserve is <u>not</u> used for a rifle range - it is a passive open space area. The reserve is located on the banks of the Castlereagh River close to Coonabarabran and contains PCT 399 which is not associated with TECs. No AHIMS items listed on this reserve. Guidance categorisation appropriate. *Reserve Map 18
44885	Lot 497 DP 753378, Lot 579 DP 720339	RIFLE RANGE (PART)	Public Recreation	Park	<u>Operational</u>	This is the only dedicated Crown Rifle Range still open and active. PCTs 379 & 386 exist on this lot. Neither are associated with TECs. NO AHIMS items located on these lots. Due to use of the site as active rifle range, this reserve is recommended to be



Attachment 1 - Crown Land Reserves – Table of Descriptions and Maps

						classified operational. **Note: CL have advised Lot 1 DP 721926 is not part of this reserve. This will be updated in their records in due course. *Reserve Map 19
49164	Lot 702 DP 1002147	RIFLE RANGE	Public Recreation	Park	Community - Park	This Reserve is <u>not</u> used for a rifle range. Rather, it forms part of a larger open space area on the Castlereagh River. Current use of this reserve is as originally intended - park and playground. PCTs 84 & 399 are present on site which are not associated with TECs. No AHIMS items listed on the reserve. Guidance category of Park is appropriate. *Reserve Map 20
520072	Lot 329- 330 DP 753378, Lot 5 DP 839637, Lot 7012 DP 1030457, Lot 7041 DP 1027284	RIFLE RANGE	Public Recreation	Park	Community - Park	This Reserve fronts the Timor Road and Castlereagh River and surrounds the water filtration plant. PCTs 84 and 281 are found on site with 281 potentially containing TECs. This Reserve is located near AHIMS listed items which are mentioned as being on Nandi Common. As the AHIMS sites are not on this Reserve, this is mentioned here as more of a precautionary matter and can be handled through the PoM. Park is appropriate. *Reserve Map 21
56732	Lot 7031 DP 1027288	RIFLE RANGE	Public Recreation	Park	Community - Park	This is a Reserve on Namoi Street in Coonabarabran. As it is substantially cleared, no PCTs are listed on the reserve. It is not used for a rifle range. Park is appropriate. *Reserve Map 22
86082	Lot 7039 DP 1027286	RIFLE RANGE	Public Recreation	Park	Community Park	Fronting Gordon & Hill Streets in Coonabarabran, this reserve has no PCTs or AHIMS listed and Park is the appropriate category. Not used as a rifle range. *Reserve Map 23
88128	Lot 17- 18 Sec 46 DP 758281, Lot 430 DP	RIFLE RANGE	Public Recreation	Park	Community - Park	Fringe timbered park on western edge of Coonabarabran. PCT 379 listed but does not have TECs associated with it. No AHIMS items listed on site. Categorisation of Park appropriate. *Reserve Map 24



Attachment 1 - Crown Land Reserves – Table of Descriptions and Maps

	753378, Lot 7027 DP 1117881					
88348	Lot 7038 DP 1055790	RIFLE RANGE	Public Recreation	Park	<u>Community - Park</u>	This passive timbered park on the Castlereagh River contains PCT 84 (River Oak & rough barked apple) which is not listed to contain TECs. No items found on the AHIMS register. Park is appropriate. *Reserve Map 25
89680	Lot 4 Sec 55 DP 758281	PLAYGROUND COONABARABRAN	Park	Park	<u>Community - Park</u>	This open passive park in Coonabarabran contains no PCTs or AHIMS items. Park is appropriate. *Reserve Map 26
90768	Lot 530 DP 753378	MASTERS PARK	Public Recreation	Park	<u>Community - Park</u>	This open space area is located near the Showground and contains a cricket pitch. Scattered trees are located along a drainage channel which contain PCT 281 (Rough-barked apple). This PCT may contain TECs. However, due to the park's location in a built-up area, the potential for extensive biodiversity is limited. Recommended to remain in Park category with intentions listed to retain established vegetation on site. No AHIMS items on site. *Reserve Map 27
120017	Lot 589 DP 721790	VISITOR INFORMATION CENTRE	Parking	General Community Use	<u>Revoked - no longer Crown Land</u>	<i>Advice confirmed from Crown Lands that this Reserve has been revoked and is under the control of WSC. No categorisation or PoM required under this process. This reserve is kept here in the interest of completeness but will not require inclusion in the recommended categorisations to Crown Lands.</i>
46646	Lot 253 DP 753378	COONABARABRAN RACECOURSE	Addition - Racecourse	Sportsground	<u>Community - Sportsground</u>	The Coonabarabran Racecourse, located on Reservoir St in a fringe setting, is partially leased by the Coonabarabran Jockey Club and contains PCT 379 (Inland Scribbly gum) - not associated with TECs. No AHIMS items are listed on the site. Sportsground is recommended for this reserve and reserve



Attachment 1 - Crown Land Reserves – Table of Descriptions and Maps

						47760 (as they both contain the Racecourse) and are actively used by sporting clubs. *Reserve Map 28
47760	Lot 125 DP 753378	COONABARABRAN RACECOURSE	Racecourse	Sportsground	Community - Sportsground	Guidance category appropriate. As for above reserve, it does not conflict with current leasing arrangements. No AHIMS or PCTs on site to suggest different categorisation. Reserve contains PCTs 379, 281. PCT 281 assoc with TECs. Rather than the reserve contain split categories, it is recommended to retain sportsground with area of PCT 281 to be managed through the PoM for biodiversity protection/enhancement. *Reserve Map 29
89626	Lot 7002 DP 1002156	COONABARABRAN FLORA RESERVE	Preservation of Native Flora	Natural Area	Community - Natural Area - Bushland	Located on the Baradine Road, this large Reserve contains PCT 379 which is not associated with TECs. No AHIMS items are registered on the site. Guidance category is appropriate. *Reserve Map 30
96923	Lot 575 DP 46121	NATIVE GROVE CEMETERY	Cemetery Purposes	General Community Use	Community - General Community Use	This Reserve contains the Coonabarabran Lawn Cemetery. Guidance category appropriate. No PCTs or AHIMS items on site. *Reserve Map 31
97723	Lot 7301 DP 1137747	RESERVE COONABARABRAN	Public Recreation	Park	Community - Park	Timbered lot on the north-eastern edge of Coonabarabran, contains PCT 281 which is associated with TECs. No AHIMS items on site. Reserve is an off-leash area under the Companion Animals Act. Guidance category appropriate with PoM to address any potential threatened communities. *Reserve Map 32
86105	Lot 7001 DP 1016445	RIFLE RANGE	Public Recreation	Park	Community - Park	Located remote from towns, this Reserve contains 3 sites as recorded in the AHIMS register. These sites can be protected/managed within the PoM rather than disclose their location for reasons of protection. The Reserve also contains PCT 401 and 421 with 421 being associated with TECs. Guidance category appropriate with PoM to address flora/fauna habitat



Attachment 1 - Crown Land Reserves – Table of Descriptions and Maps

						incentives. *Reserve Map 33
89668	Lot 26 DP 757113	RESERVE ROCKY GLEN	Public Recreation	Park	<u>Community - Park</u>	PCT 433 - potentially contains TECs on this site. No specific listings of endangered/threatened species on this reserve. Located remote from towns, sparsely timbered, no AHIMS items on site. Guidance category appropriate with PoM to address flora/fauna habitat incentives. *Reserve Map 34
1997	Lot 29 DP 39719, Lot 7001 DP 96556, Lot 7300 DP 1140484	RESERVE ROCKY GLEN	Public Recreation	Park	<u>Community - Park</u>	Remote reserve located on Oxley Highway at intersection with Borah Creek Rd. Gazetted in 1884. PCT 399 and 401 present on the reserve - neither are associated with TECs. No AHIMS items on site. Guidance category of Park appropriate. *Reserve Map 35
91389	Lot 7003 DP 94719, Lot 7004 DP 1001546, Lot 7006 DP 94720, Lot 7302 DP 1149225	RESERVE WARKTON	Public Recreation	Park	<u>Community - Park</u>	Remote res located off the Newell Highway at Wattle Springs. No AHIMS items listed on the reserve and PCTs 84, 281, 899* exist on the reserve. PCT 281 associated with TECs. No specific listings of endangered/threatened species on this reserve. Licence for grazing issued on this reserve. Guidance category appropriate as it is in accordance with current use. PoM to address flora/fauna habitat incentives. *Reserve Map 36
92335	Lot 125 DP 40279	RESERVE ULAMAMBRI	Public Recreation	Park	<u>Community - Park</u>	Located south of Coonabarabran, this reserve on the Castlereagh River fronts Warrumbungles Way. No AHIMS items listed for this reserve. PCT 281* covers this reserve (Rough Barked Apple) which is associated with TECs. No specific listings of threatened species on this reserve. Guidance category appropriate due to reserve's remote location and Council's intention to retain natural features of this



Attachment 1 - Crown Land Reserves – Table of Descriptions and Maps

						reserves. *Reserve Map 37
97307	Lots 8-9 DP 753380	RESERVE DERINGULA	Public Recreation	Park	<u>Community - Park</u>	Located on Jack Halls Creek, this reserve contains PCT 84* (River Oak). No TECs associated with this PCT. Licence issued for grazing on this reserve. No AHIMS items on site. Guidance category appropriate. *Reserve Map 38
47862	Lot 7001 DP 1016628	CHIPS RESERVE	Camping/ Public Recreation/ Water Supply	General Community Use	<u>Community - General Community Use</u>	Located west of Coonabarabran, Chips Reserve fronts the Belar Creek and is currently leased. No AHIMS items are on site and a number of PCTs exist on the reserve (incl PCT 393, 395, 420 and 599*). No specific listings of threatened species on this reserve. Guidance category appropriate for current usage. *Reserve Map 39
76398	Lots 64 & 85 DP 753380, Lot 7300- 7301 DP 1149225	BELAR CREEK RECREATION	Public Recreation	Park	<u>Community - Park</u>	Also known as Jack Halls Creek and located at Tannabar, this Reserve is located across from existing Reserve Warkton. No AHIMS items are located on the Reserve. PCT 281 on site but fronting a major highway so opportunities for TECs to thrive are limited. No specific listings of threatened species on this reserve. Guidance category appropriate. *Reserve Map 40
86978	Lots 9- 10 DP 753365, Lot 7300 DP 753365	PUBLIC RECREATION	Public Recreation	Park	<u>Community - Park</u>	Located off Warkton Rd Coonabarabran, this reserve is leased and contains PCTs 281, 395 & 437*. These PCTs can be associated with TECs. Despite this, categorisation of Park can still allow for current land use and protect potential threatened species. No threatened, critical or endangered species recorded on site. Lot 7300 cannot be located however CL have advised that it does exist as part of this reserve and is a closed road. As such it is to be included & categorised. *Reserve Map 41
91071	Lot 131 DP 754983	BABY CREEK RESERVE	Public Recreation	Park	<u>Community - Park</u>	This reserve contains 3 items from the AHIMS register. These items' locations are best kept in confidence and managed through the PoM. Park is appropriate. *Reserve Map 42



Attachment 1 - Crown Land Reserves – Table of Descriptions and Maps

53797	Lot 7006 DP 1126272	FROG HOLLOW	Public Recreation	Park	Community - Park	Reserve in locality of Ulamambri. No AHIMS items on site. PCT 599* showing on site - which is associated with TECs. However, the reserve is located in a built-up area and adjacent to silos. Question validity of PCT 599 in this instance. Guidance category appropriate. *Reserve Map 43
86997	Lot 112 DP 754301	RUBBISH DEPOT	Rubbish Depot	General Community Use	Operational	Due to use as <u>operational/active</u> rubbish depot and risk of contamination, this reserve is recommended to be classified operational. *Reserve Map 44
68100	Lot 205 DP 754291, Lot 7010 DP 93529	ROBERTSON PARK	Public Recreation	Park	Community - Park	Robertson Park is located on the northern side of Dunedoo and fronts the Talbragar River. No AHIMS items on site and PCT 202* is located slightly in the northern end. Most of the Park is cleared and developed for passive and active recreation. Guidance category appropriate. *Reserve Map 45
81962	Lot 701- 702* DP 93288	DUNEDOO WAR MEMORIAL BATHS	Public baths	Park	Community - Park	Guidance category appropriate. No AHIMS or PCTs on site. <i>*Note, Crown Lands have advised that Lot 702 should not have been associated with this Reserve as it does not exist. Steps are being taken to remove this lot from the title description for this Reserve. *Reserve Map 46</i>
89588	Lot 119 DP 754291, Lot 7011 DP 93332, Lot 7012 DP 93290	DUNEDOO RIVERSIDE PARK	Public Recreation	Park	Community - Park	This substantially cleared passive park contains PCT 78* and is not associated with TECs. Licence for grazing issued over this reserve for 2020. This is commensurate with its management as a cleared park. Lot 7012 has two sites listed on the AHIMS register. These sites can be managed as part of the PoM process. *Reserve Map 47
520049	Lot 3 Section 5 DP 758364	JUBILEE MEMORIAL HALL	Public Hall	General Community Use	Community - General Community Use	This cleared site in the township of Dunedoo contains a historic Hall. Hall not listed in LEP as a Heritage Item. Guidance category appropriate. *Reserve Map 48
85661	Lot 338,	GOOLHI PUBLIC	Public	General	Community -	Located on the corner of Goolhi Road and



Attachment 1 - Crown Land Reserves – Table of Descriptions and Maps

	345, 350 DP 755479	HALL	Hall/Public Recreation	Community Use/Park	General Community Use	Boooloola Road, these lots partly contain PCT 101* (Poplar/Yellow & Western Grey Box) which can be associated with TECs. This vegetation can be protected through the PoM. The Goolhi Hall and old tennis courts are also located on site. General Community Use is most appropriate. *Reserve Map 49
90681	Lot 7003 DP 753368	RESERVE GREENBAH CREEK	Public Recreation	Park	<u>Community</u> Park	This lot cannot be found on six maps but is showing as a Crown Reserve on the CL portal. CL have advised that this reserve does exist and Council is to categorise based on the portal maps. This reserve is located at the junction of Greenbah and Wingabutta Creeks. Park is appropriate. *Reserve Map 50
87118	Lot 7001 DP 96951	HOBBS GULLY	Resting Place	General Community Use	<u>Community</u> - General Community Use	Located on the eastern side of Leadville, this reserve has a current lease for grazing and contains PCT 281* (Rough barked Apple) which can be associated with TECs. Despite this, the reserve is only sparsely timbered with the vegetation type and not all of the reserve is captured as PCT 281. Guidance category appropriate with more detail able to be provided in the PoM. *Reserve Map 51
95872	Lots 172-173 DP 750766	TALBRAGAR CEMETERY LEADVILLE	Cemetery	General Community Use	<u>Community</u> - General Community Use	This timbered reserve on the northern edge of a rest stop on the Golden Highway contains PCT 437* (Yellow box grassy woodland) which is associated with TECs. As it was set aside for a cemetery, it is not known whether any burials took place here and as such, retaining the category of General Community Use is most appropriate. *Reserve Map 52
98063	Lot 7306 DP 1152229	NULLEN REST AREA	Public Recreation	Park	<u>Community</u> - Park	This reserve contains part of the Highway rest area referred to in Reserve 95872 (above) and part timbered land. PCT 81 covers the timbered portion which can be associated with TECs. The category of Park can continue to protect vegetation types and habitat on site. Park is appropriate. *Reserve Map 53



Attachment 1 - Crown Land Reserves – Table of Descriptions and Maps

1591	Lots 10-16, 3-9 and 7024 Section 13 DP 758668	MENDOORAN CRICKET OVAL	Public Recreation	Park	Community - Park	This reserve contains a cricket oval and some scatterings of PCT 202* (Fuzzy box woodland) which can be associated with TECs. Recommended to include management of these plant communities in the PoM. Park is appropriate as this remains the dominant use. Note - Lot 7024 does not exist on six maps but CL have advised that this lot is a closed road which doesn't have an identifier. Lot 7024 is to be considered as part of this reserve. *Reserve Map 54
1592	Lot 7020 DP 1109623	BRAMBIL PARK	Public Recreation	Park	Community - Park	Partly cleared, this reserve on the southern edge of Mendooran is currently licensed for grazing. The Reserve contains some PCT 78* (River Red Gum) which isn't associated with TECs. Park is appropriate. *Reserve Map 55
73370	Lot 116 DP 754971, Lots 7017-7019 DP 94725	MENDOORAN CAMPING AREA	Public Recreation	Park	Community - Park	Currently used as a camping area on the Castlereagh River, this reserve partly contains PCT 78* (River Red Gum) which isn't associated with TECs. The vegetation on site can be protected through the PoM. Park is appropriate. *Reserve Map 56
77108	Lots 1-2 Sec 9 DP 758668, Lots 6-8 Sec 8 DP 758668, Lot 7030 DP 1095353 Lot 7031 DP 1095448	MENDOORAN PARK	Public Recreation	Park	Community - Park	This reserve contains tennis courts and an open Park in the main street of Mendooran. Park is appropriate. *Reserve Map 57
85682	Lot 7003 DP 94796	BENI CROSSING RESTING PLACE	Resting Place	General Community Use	Community - General Community Use	This reserve on the southern side of the river at Beni Crossing contains PCT 81* (Western Grey Box) and can be associated with TECs. Despite this, the reserve's current passive use and subsequent PoM suits



Attachment 1 - Crown Land Reserves – Table of Descriptions and Maps

						the category of General Community Use. *Reserve Map 58
69283	Lots 38, 103 DP 753366	MENDOORAN NIGHT SOIL DEPOT	Night Soil/Rubbis h Depot	General Community Use	<u>Operational</u>	This reserve is currently used as passive open land which due to past uses, is secured from public access. It is also partly leased. Due to current access restrictions, this reserve is recommended to be classified operational. *Reserve Map 59
69431	Lot 23 DP 754971	RUBBISH DEPOT	Rubbish Depot	General Community Use	<u>Operational</u>	This prior waste facility has potential contamination issues and is closed to the public. Operational is recommended. *Reserve Map 60
76877	Lots 7-8 Sec 1 DP 758674	MERRYGOEN PARK/TENNIS COURTS	Public Recreation	Park	<u>Community - Park</u>	This cleared reserve contains a manager's residence and open space/tennis courts. Park is appropriate. *Reserve Map 61
78473	Lot 7300 DP 1146397	PUBLIC RECREATION	Public Recreation	Park	<u>Community - Park</u>	This sparsely timbered reserve is located on the eastern side of Merrygoen and contains PCT 81* (Western Grey Box) which can be associated with TECs. This reserve has a licence issued over it for grazing. Park is appropriate. *Reserve Map 62
80278	Lots 1-3 Sec 3 DP 758761, Lots 3, 6-9 Sec 5 DP 758761, Lots 7300, 7305 DP 1150039	NEILREX PLAYGROUND	Public Recreation	Park	<u>Community - Park</u>	Lots 1-3 Sec 5 contain tennis courts. Remaining lots are vacant and mostly cleared and used for passive play and use.. Park is appropriate. *Reserve Map 63
120081	Lot 305 DP 728776	UARBRY RUBBISH DEPOT	Rubbish Depot	General Community Use	<u>Operational</u>	This waste depot is closed to the public for potential contamination reasons. Operational is recommended. *Reserve Map 64
97167	Lot 11 DP 704074	PUBLIC HALL	Public Hall	General Community Use	<u>Community - General Community Use</u>	This public hall site in Weetaliba is cleared of vegetation. General Community Use is appropriate. *Reserve Map 65
86771	Lot 110	RUBBISH DEPOT	Rubbish	General	<u>Operational</u>	This prior waste facility has potential



Attachment 1 - Crown Land Reserves – Table of Descriptions and Maps

	DP 40338		Depot	Community Use		contamination issues and is closed to the public. It also contains one (1) item from the AHIMS register. Due to public health and safety issues, this reserve is recommended to be classified operational. *Reserve Map 66
69528	Lot 1 DP 750294	RUBBISH DEPOT	Garbage Depot - Sanitary Purposes	General Community Use	<u>Operational</u>	This prior waste facility is also closed to the public from potential contamination issues. Due to public health and safety issues, this reserve is recommended to be classified operational. *Reserve Map 67
1205	Lot 16 DP 753399, Lot 7001 DP 1025630, Lot 7003 DP 1029640	PUBLIC RECREATION	Public Recreation	Park	<u>Community - Park</u>	Located near Timor Rock, this heavily timbered reserve contains PCTs 379, 393, & 420. None of these are associated with TECs. Guidance category appropriate. *Reserve Map 68
60139	Lot 134 DP 754959 Lot 7015 DP 1033128	SANITARY PURPOSES, BINNAWAY	Sanitary Purposes	General Community Use	<u>Operational</u>	This reserve is currently used as a waste transfer station and has been previously used as a waste facility. The site could be contaminated and is a secured site (with the exception of the transfer section). Due to prior uses and the fact that it is a secure site, this reserve is recommended to be classified operational. *Reserve Map 69
73778	Lot 113 DP 750774	RUBBISH DEPOT, CRABOON VILLAGE	Rubbish Depot	General Community Use	<u>Operational</u>	This site, due to past uses, is secured from public entry and surrounded by farmland. It has the potential for contamination on site. The reserve is landlocked, in that no public access road provides physical or legal access to it. It is currently leased by an adjoining owner. Substantially cleared, this reserve is recommended to be classified operational. *Reserve Map 70



Attachment 1 - Crown Land Reserves – Table of Descriptions and Maps

*TECs are Threatened Ecological Communities, as depicted in the NSW BioNet Vegetation Classification system and the BioNet Atlas of NSW Wildlife. This has since been developed into the SEED data portal. Whilst this database is being continually updated, it represents the best information available online for professionals and the public to complete desktop plant type assessments.

PCT is Plant Community Type - also taken from the above SEED database.

The following Table outlines PCTs mentioned above and the indicative species found within this plant community. If the confidence level for the PCT on site is High, the PCT is associated with Threatened Ecological Communities (TECs) and the PCT is only found within a TEC, then a Natural Area categorisation is to be considered, noting potential Native Title implications.



Attachment 1 - Crown Land Reserves – Table of Descriptions and Maps

Table: Plant Community Types

Plant Community Types (PCT)	PCT Common Name	Indicative Species	Confidence Level for PCT	Plant Community Type associated with Threatened Ecological Communities (TECs) Y/N	Plant Community Type only found within the Threatened Ecological Community?
78	River Red Gum riparian tall woodland / open forest wetland in the Nandewar Bioregion and Brigalow Belt South Bioregion	Eucalyptus camaldulensis , Casuarina cunninghamiana / Callistemon sieberi , Leptospermum polygalifolium / Cynodon dactylon , Austrostipa verticillata , Alternanthera denticulata , Commelina cyanea	Medium	No	No
81	Western Grey Box - cypress pine shrub grass shrub tall woodland in the Brigalow Belt South Bioregion	Eucalyptus microcarpa , Callitris glaucophylla , Allocasuarina luehmannii / Maireana microphylla , Acacia hakeoides , Senna form taxon zygophylla , Acacia deanei subsp. deanei / Eremophila debilis , Einadia nutans subsp. nutans , Enteropogon acicularis , Austrostipa scabra subsp. scabra	High	Yes	No



Attachment 1 - Crown Land Reserves – Table of Descriptions and Maps

Plant Community Types (PCT)	PCT Common Name	Indicative Species	Confidence Level for PCT	Plant Community Type associated with Threatened Ecological Communities (TECs) Y/N	Plant Community Type only found within the Threatened Ecological Community?
84	River Oak - Rough-barked Apple - red gum - box riparian tall woodland (wetland) of the Brigalow Belt South Bioregion and Nandewar Bioregion	Casuarina cunninghamiana subsp. cunninghamiana , Angophora floribunda , Eucalyptus blakelyi , Eucalyptus melliodora / Acacia implexa , Bursaria spinosa subsp. spinosa , Notelaea microcarpa var. microcarpa , Callistemon sieberi / Microlaena stipoides var. stipoides , Austrostipa verticillata , Lomandra longifolia , Commelina cyane	High	No	No
101	Poplar Box - Yellow Box - Western Grey Box grassy woodland on cracking clay soils mainly in the Liverpool Plains, Brigalow Belt South Bioregion	Eucalyptus populnea subsp. bimbil , Eucalyptus melliodora , Eucalyptus microcarpa / Geijera parviflora , Maireana microphylla , Alectryon oleifolius subsp. elongatus , Capparis mitchellii , Maireana microphylla / Aristida personata , Chloris truncata , Bothriochloa decipiens ,	High	Yes	No



Attachment 1 - Crown Land Reserves – Table of Descriptions and Maps

Plant Community Types (PCT)	PCT Common Name	Indicative Species	Confidence Level for PCT	Plant Community Type associated with Threatened Ecological Communities (TECs) Y/N	Plant Community Type only found within the Threatened Ecological Community?
		Einadia nutans subsp. nutans			
202	Fuzzy Box woodland on colluvium and alluvial flats in the Brigalow Belt South Bioregion (including Pilliga) and Nandewar Bioregion	Eucalyptus conica , Eucalyptus blakelyi , Eucalyptus melliodora , Callitris glaucophylla / Acacia deanei subsp. paucijuga , Geijera parviflora , Dodonaea viscosa subsp. spatulata / Austrostipa verticillata , Elymus scaber var. scaber , Boerhavia dominii , Elymus scaber var. scaber	High	Yes	No
281	Rough-Barked Apple - red gum - Yellow Box woodland on alluvial clay to loam soils on valley flats in the northern NSW South Western Slopes Bioregion and Brigalow Belt South Bioregion	Angophora floribunda , Eucalyptus blakelyi , Eucalyptus melliodora / Acacia implexa , Dodonaea viscosa subsp. angustifolia , Bursaria spinosa subsp. spinosa , Hibbertia obtusifolia / Austrostipa verticillata , Aristida ramosa , Calotis lappulacea , Arundinella nepalensis	High	Yes	Yes



Attachment 1 - Crown Land Reserves – Table of Descriptions and Maps

Plant Community Types (PCT)	PCT Common Name	Indicative Species	Confidence Level for PCT	Plant Community Type associated with Threatened Ecological Communities (TECs) Y/N	Plant Community Type only found within the Threatened Ecological Community?
379	Inland Scribbly Gum - White Bloodwood - Red Stringybark - Black Cypress Pine shrubby sandstone woodland mainly of the Warrumbungle NP - Pilliga region in the Brigalow Belt South Bioregion	Eucalyptus rossii , Corymbia trachyphloia subsp. amphistomatica , Callitris endlicheri , Eucalyptus macrorhyncha / Bossiaea rhombifolia subsp. rhombifolia , Melichrus erubescens , Persoonia cuspidifera , Cassinia quinquefaria / Joycea pallida , Pomax umbellata , Dichelachne micrantha , Lomandra filiformis subsp. filiformis	High	No	No
386	Tumbledown Red Gum trachyte rock flat sedgeland - shrubland of the Warrumbungle Range region	Eucalyptus dealbata , Callitris glaucophylla / Calytrix tetragona , Phebalium squamulosum subsp. squamulosum , Notelaea microcarpa var. microcarpa , Acacia cultriformis / Isolepis hookeriana , Crassula sieberiana subsp. sieberiana , Wurmbea biglandulosa , Juncus	Low	No	No



Attachment 1 - Crown Land Reserves – Table of Descriptions and Maps

Plant Community Types (PCT)	PCT Common Name	Indicative Species	Confidence Level for PCT	Plant Community Type associated with Threatened Ecological Communities (TECs) Y/N	Plant Community Type only found within the Threatened Ecological Community?
		usitatus			
393	White Box shrubby woodland of the western Liverpool Range, Warrumbungle Range and south-west Pilliga forests, Brigalow Belt South Bioregion	Eucalyptus albens , Callitris glaucophylla , Angophora floribunda , Brachychiton populneus subsp. populneus / Olearia elliptica subsp. elliptica , Notelaea microcarpa var. microcarpa , Acacia implexa , Cassinia quinquefaria / Cymbopogon refractus , Desmodium brachypodum , Austrodanthonia racemosa var. obtusata , Poa sieberiana	High	No	No
395	Derived speargrass - wallaby grass - wire grass mixed forb grassland mainly in the Coonabarabran - Pilliga - Coolah region	Acacia deanei subsp. deanei , Acacia salicina , Senna aciphylla , Dodonaea viscosa subsp. angustifolia / Austrostipa scabra subsp. falcata , Austrostipa verticillata , Dichanthium sericeum subsp. sericeum , Panicum	Low	Yes	No



Attachment 1 - Crown Land Reserves – Table of Descriptions and Maps

Plant Community Types (PCT)	PCT Common Name	Indicative Species	Confidence Level for PCT	Plant Community Type associated with Threatened Ecological Communities (TECs) Y/N	Plant Community Type only found within the Threatened Ecological Community?
		queenslandicum var. queenslandicum / Calotis lappulacea , Sida corrugata , Wahlenbergia stricta subsp. stricta , Vittadinia cuneata			
398	Narrow-leaved Ironbark - White Cypress Pine - Buloke tall open forest on lower slopes and flats in the Pilliga Scrub and surrounding forests in the central north Brigalow Belt South Bioregion	Eucalyptus crebra , Callitris glaucophylla , Allocasuarina luehmannii , Eucalyptus chloroclada / Melichrus urceolatus , Acacia deanei subsp. paucijuga , Cassinia arcuata , Acacia spectabilis / Austrostipa scabra subsp. scabra , Cyperus gracilis , Calotis cuneifolia , Eragrostis lacunaria	High	No	No
399	Red gum - Rough-barked Apple +/- tea tree sandy creek woodland (wetland) in the Pilliga - Goonoo sandstone forests, Brigalow Belt South Bioregion	Eucalyptus blakelyi , Eucalyptus camaldulensis <--> chloroclada , Angophora floribunda , Callitris glaucophylla / Leptospermum polygalifolium subsp. transmontanum , Acacia deanei subsp. paucijuga , Acacia penninervis var. penninervis , Callistemon	High	No	No



Attachment 1 - Crown Land Reserves – Table of Descriptions and Maps

Plant Community Types (PCT)	PCT Common Name	Indicative Species	Confidence Level for PCT	Plant Community Type associated with Threatened Ecological Communities (TECs) Y/N	Plant Community Type only found within the Threatened Ecological Community?
		linearis / Arundinella nepalensis , Juncus continuus , Cyperus lucidus , Alternanthera denticulata			
401	Rough-barked Apple - Blakelys Red Gum - Black Cypress Pine woodland on sandy flats, mainly in the Pilliga Scrub region	Angophora floribunda , Eucalyptus blakelyi , Callitris endlicheri , Eucalyptus chloroclada / Hibbertia obtusifolia , Cassinia arcuata , Acacia spectabilis , Brachyloma daphnoides subsp. pubescens / Lomandra longifolia , Arundinella nepalensis , Imperata cylindrica var. major , Ajuga australis	High	No	No
420	Red Stringybark - Rough-barked Apple +/- Nortons Box open forest on hillslopes in the Warrumbungle NP - Coolah regions	Eucalyptus macrorhyncha , Angophora floribunda , Eucalyptus nortonii / Olearia elliptica subsp. elliptica , Cassinia quinquefaria , Acacia implexa , Dodonaea viscosa subsp. angustifolia / Austrodanthonia racemosa var. obtusata , Elymus scaber var. scaber ,	High	No	No



Attachment 1 - Crown Land Reserves – Table of Descriptions and Maps

Plant Community Types (PCT)	PCT Common Name	Indicative Species	Confidence Level for PCT	Plant Community Type associated with Threatened Ecological Communities (TECs) Y/N	Plant Community Type only found within the Threatened Ecological Community?
		Hydrocotyle laxiflora , Clematis glycinoides var. glycinoides			
421	Yellow Box - White Cypress Pine alluvial terrace flats grassy woodland in the Pilliga forests and surrounds, Brigalow Belt South Bioregion	Eucalyptus melliodora , Callitris glaucophylla , Angophora floribunda / Acacia deanei subsp. paucijuga , Cassinia arcuata , Maireana microphylla / Aristida vagans , Austrostipa scabra subsp. scabra , Vittadinia dissecta var. hirta , Boerhavia dominii	High	Yes	Yes
433	White Box grassy woodland to open woodland on basalt flats and rises in the Liverpool Plains sub-region, BBS Bioregion	Eucalyptus albens , Acacia pendula / Sclerolaena birchii / Austrostipa aristiglumis , Austrodanthonia bipartita , Mentha satureioides , Boerhavia dominii	High	Yes	Yes



Attachment 1 - Crown Land Reserves – Table of Descriptions and Maps

Plant Community Types (PCT)	PCT Common Name	Indicative Species	Confidence Level for PCT	Plant Community Type associated with Threatened Ecological Communities (TECs) Y/N	Plant Community Type only found within the Threatened Ecological Community?
437	Yellow Box grassy woodland on lower hillslopes and valley flats in the southern NSW Brigalow Belt South Bioregion	Eucalyptus melliodora / Pimelea curviflora var. curviflora , Acacia implexa , Acacia decora , Solanum cinereum / Bothriochloa decipiens , Austrostipa aristiglumis , Einadia trigonos , Oxalis perennans	High	Yes	Yes
468	Narrow-leaved Ironbark - Black Cypress Pine +/- Blakelys Red Gum shrubby open forest on sandstone low hills in the southern Brigalow Belt South Bioregion (including Goonoo)	Eucalyptus crebra , Callitris endlicheri , Eucalyptus blakelyi , Eucalyptus sideroxylon / Calytrix tetragona , Melichrus urceolatus , Acacia triptera , Acacia hakeoides / Austrodanthonia monticola , Goodenia hederacea subsp. hederacea , Lomandra filiformis subsp. coriacea , Platysace ericoides	Medium	No	No
599	Blakelys Red Gum - Yellow Box grassy tall woodland on flats and hills in the Brigalow Belt South	Eucalyptus melliodora , Eucalyptus blakelyi , Angophora floribunda / Acacia implexa , Geijera	High	Yes	Yes



Attachment 1 - Crown Land Reserves – Table of Descriptions and Maps

Plant Community Types (PCT)	PCT Common Name	Indicative Species	Confidence Level for PCT	Plant Community Type associated with Threatened Ecological Communities (TECs) Y/N	Plant Community Type only found within the Threatened Ecological Community?
	Bioregion and Nandewar Bioregion	parviflora , Olearia elliptica subsp. elliptica / Aristida personata , Elymus scaber var. scaber , Glycine tabacina , Carex inversa			
899	Kunzea ambigua - Bracelet Honey-myrtle shrubland on rhyolite outcrops, southern South East Corner Bioregion	Allocasuarina littoralis , Dodonaea truncatiales , Kunzea ambigua , Leionema ralstonii / Dendrobium speciosum , Entolasia stricta , Lepidosperma laterale , Lepidosperma urophorum	Very Low	No	No

Appendix A: Reserve Maps

Reserve Map 1. R85378 Bandulla Rubbish Depot





Reserve Map 2. R86971 Baradine Rubbish Depot





Reserve Map 3. R89960 Reserve Baradine





Reserve Map 4. R120056 Baradine Bushfire Brigade and Rescue Station





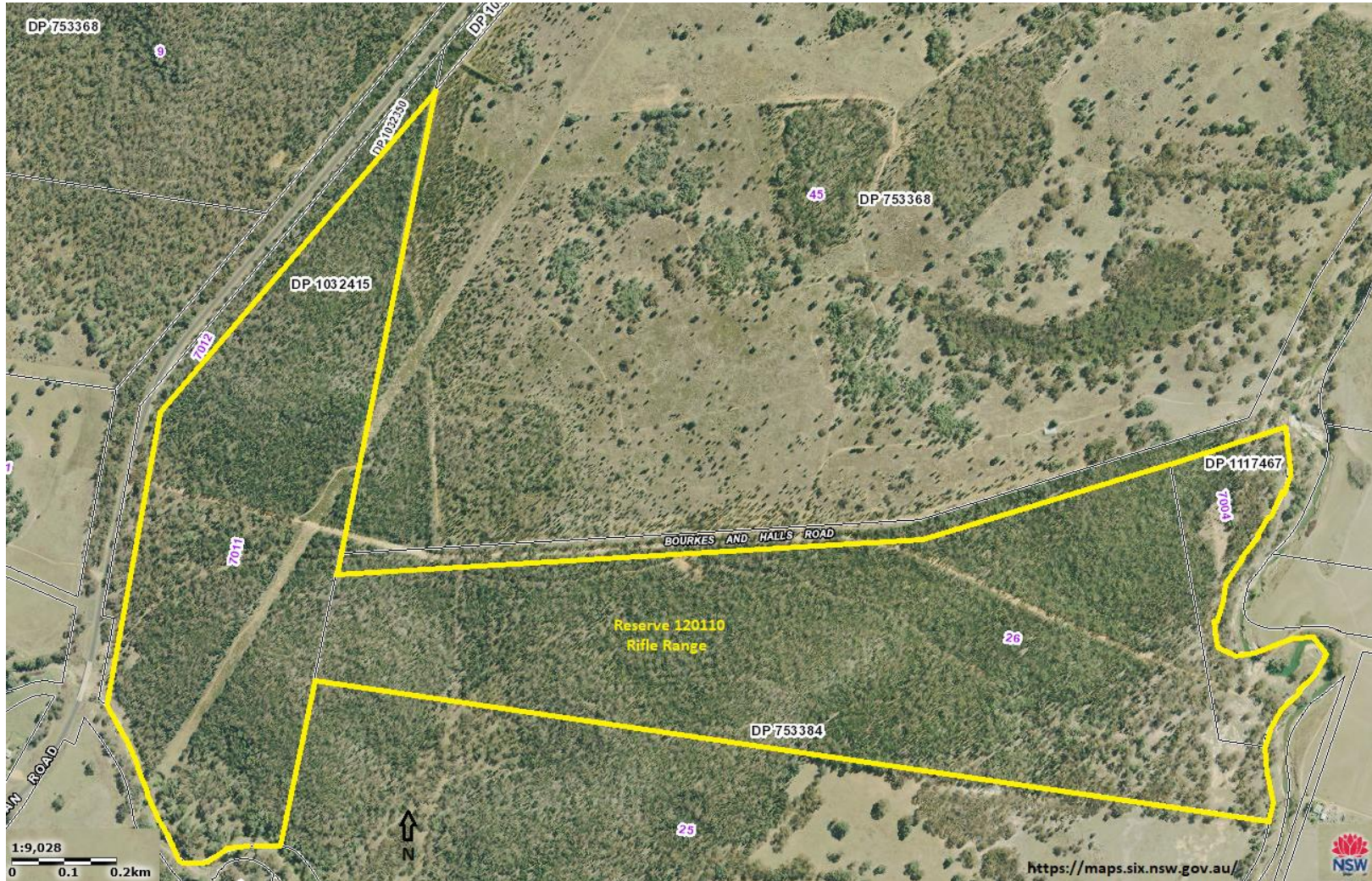
Reserve Map 5. R68452 Baradine Recreation and Camping





Reserve Map 6. R120110 Rifle Range





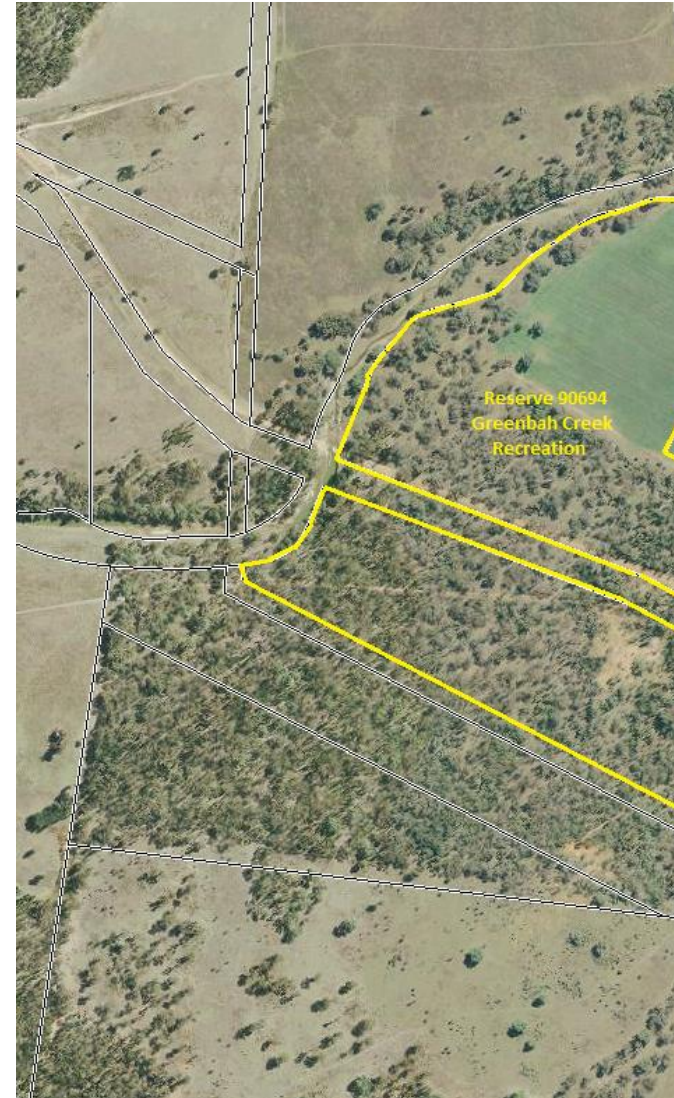
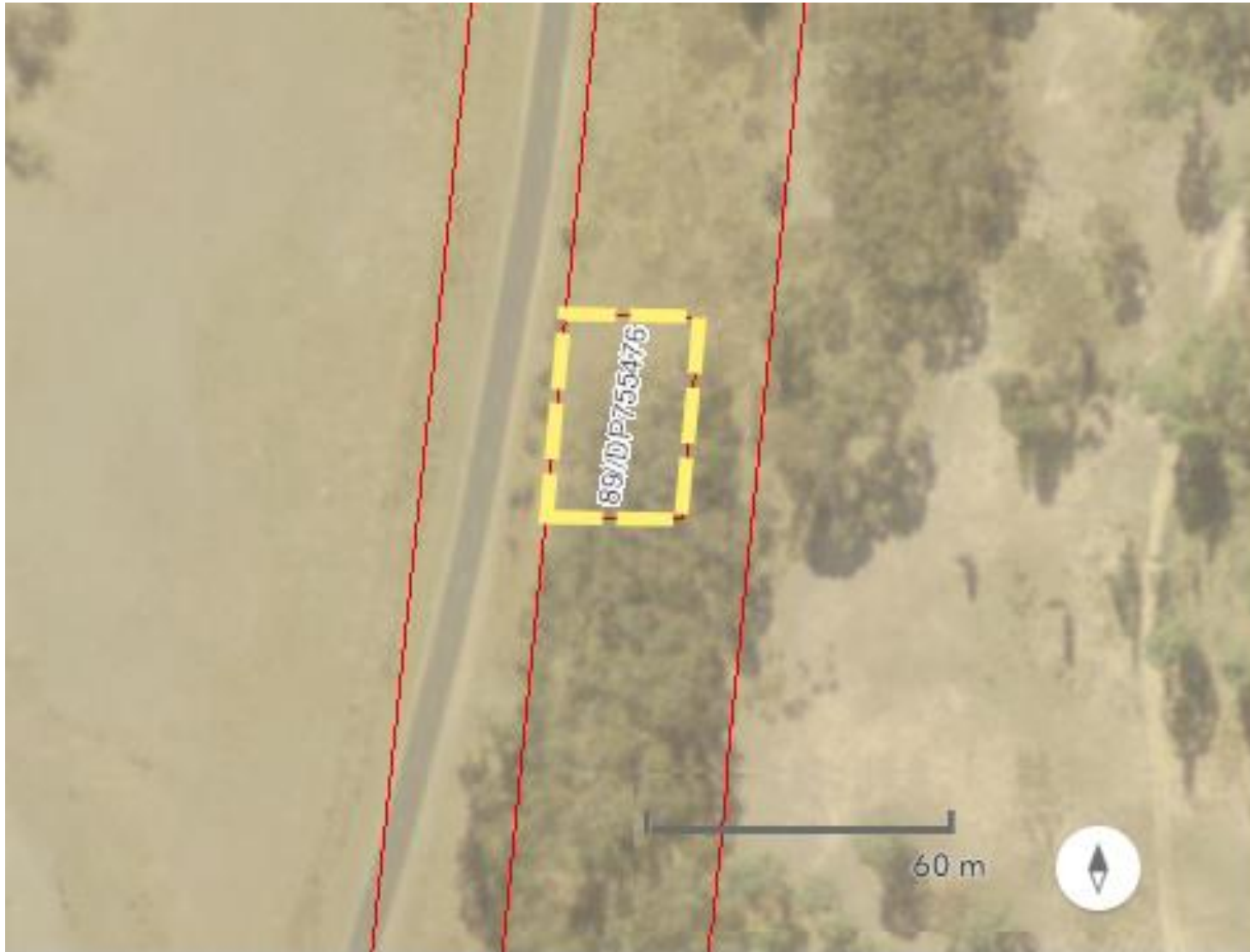
Reserve Map 7. R65440 Binnaway Showground





Reserve Map 8. R90694 Greenbah Creek Recreation





Reserve Map 9. R36127
Preservation of Graves

Reserve Map 10. R31715 Queensborough Park



E. mward@narromine.nsw.gov.au



Reserve Map 11. R44862 Night Soil Depot





Reserve Map 12. R51177 Queensborough Park West





Reserve Map 13. R51266 Coolah Waste Transfer Depot





Reserve Map 14. R65210 Coolah Night Soil Depot





Reserve Map 15. R81773 Jorrock's Park





Reserve Map 16. R83250 Three Corner Park





Reserve Map 17. R11 Queensborough Park Coolah





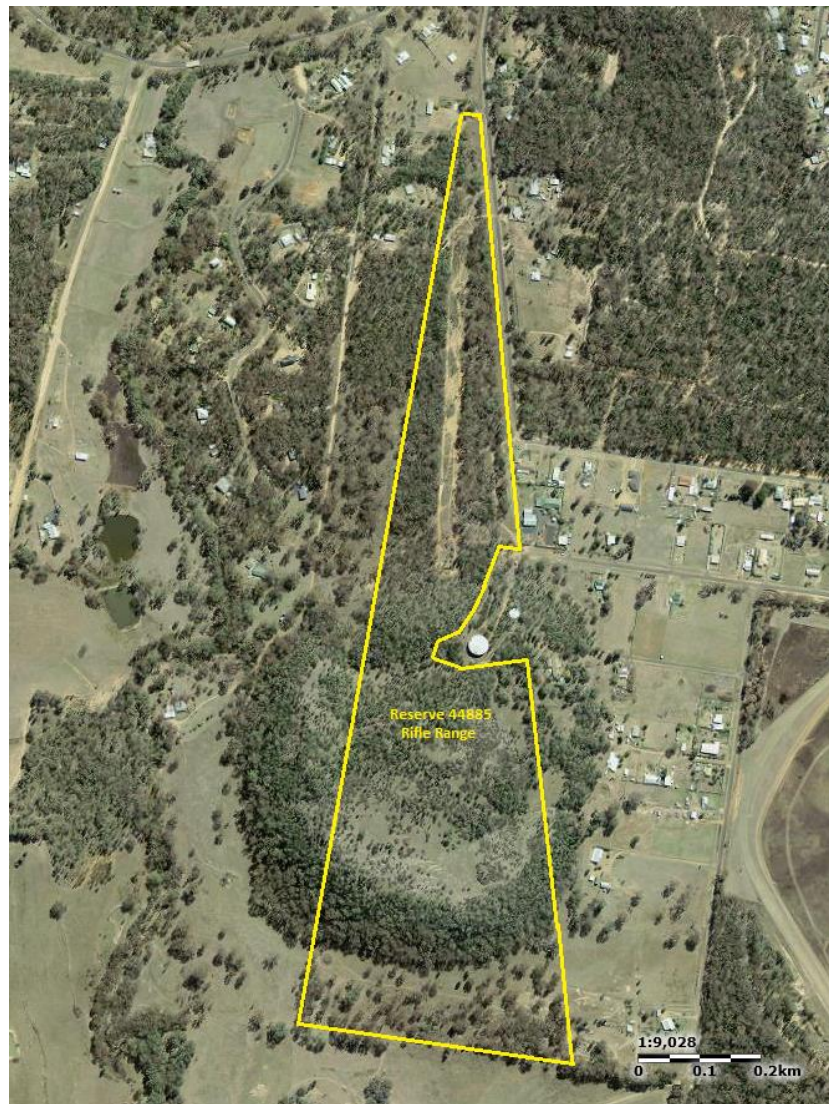
Reserve Map 18. R14138 Rifle Range





Reserve Map 19. R44885 Rifle Range (Part)





Reserve Map 20. R49164 Rifle Range





Reserve Map 21. R520072 Rifle Range





Reserve Map 22. R56732 Rifle Range





Reserve Map 23. R86082 Rifle Range – now Park





Reserve Map 24. R88128 Rifle Range





Reserve Map 25. R88348 Rifle Range





Reserve Map 26. R89680 Playground Coonabarabran





Reserve Map 27.

R90768 Masters Park





Reserve Map 28. R46646 Coonabarabran Racecourse





Reserve Map 29. R47760 Coonabarabran Racecourse





Reserve Map 30. R89626 Coonabarabran Flora Reserve





Reserve Map 31. R96923 Native Grove Cemetery





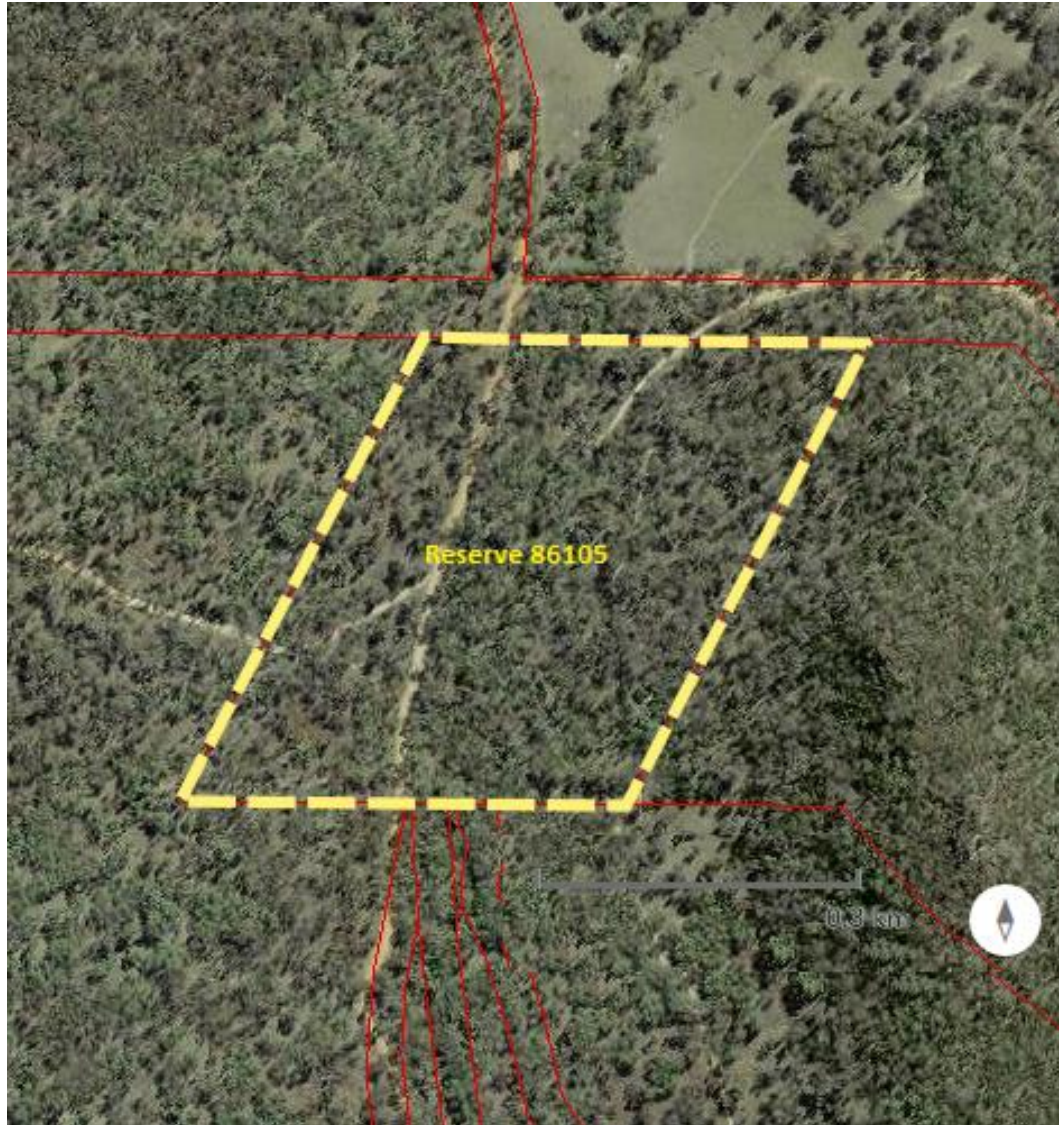
Reserve Map 32. R97723 Reserve Coonabarabran





Reserve Map 33. R86105 Rifle Range





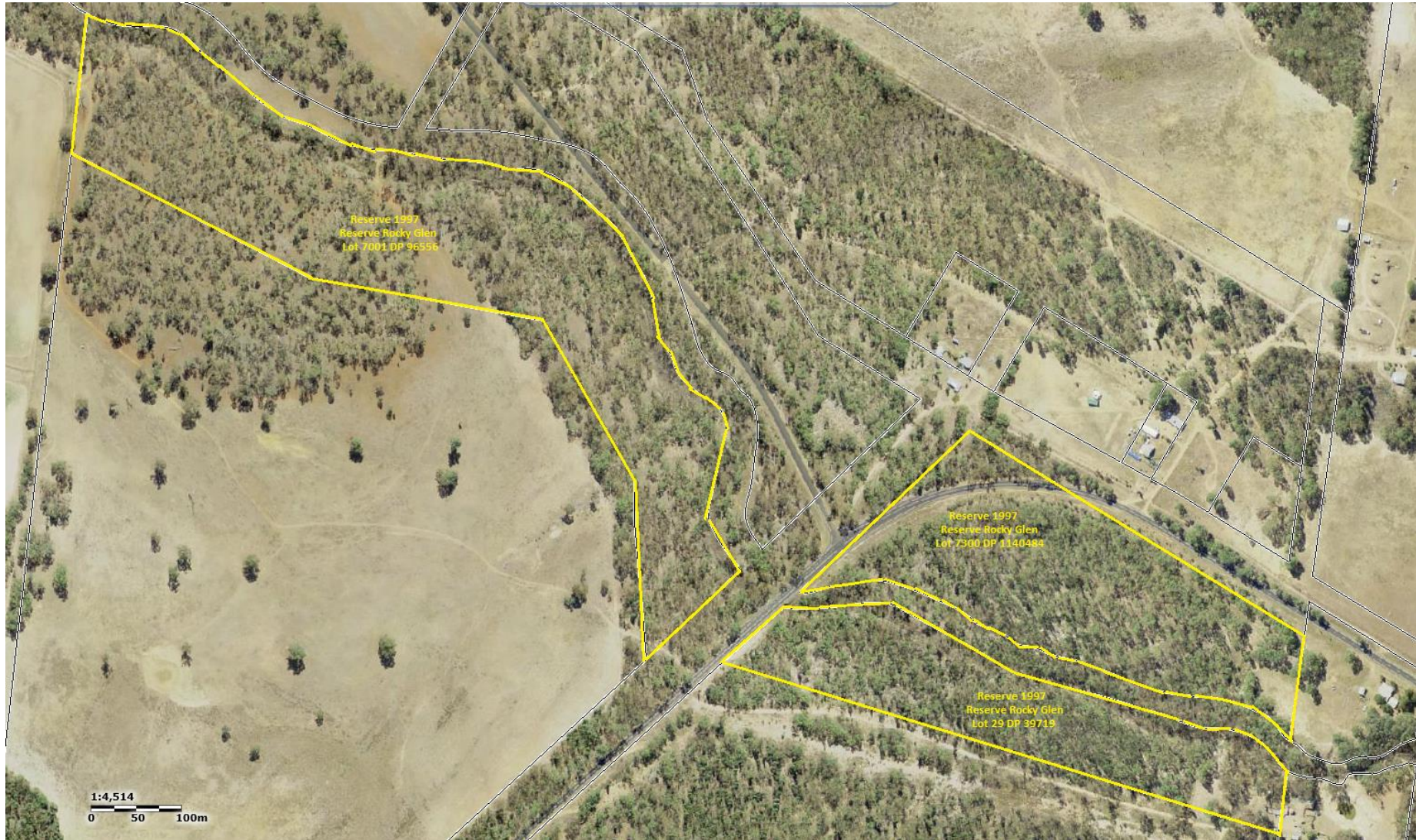
Reserve Map 34. R89668 Reserve Rocky Glen





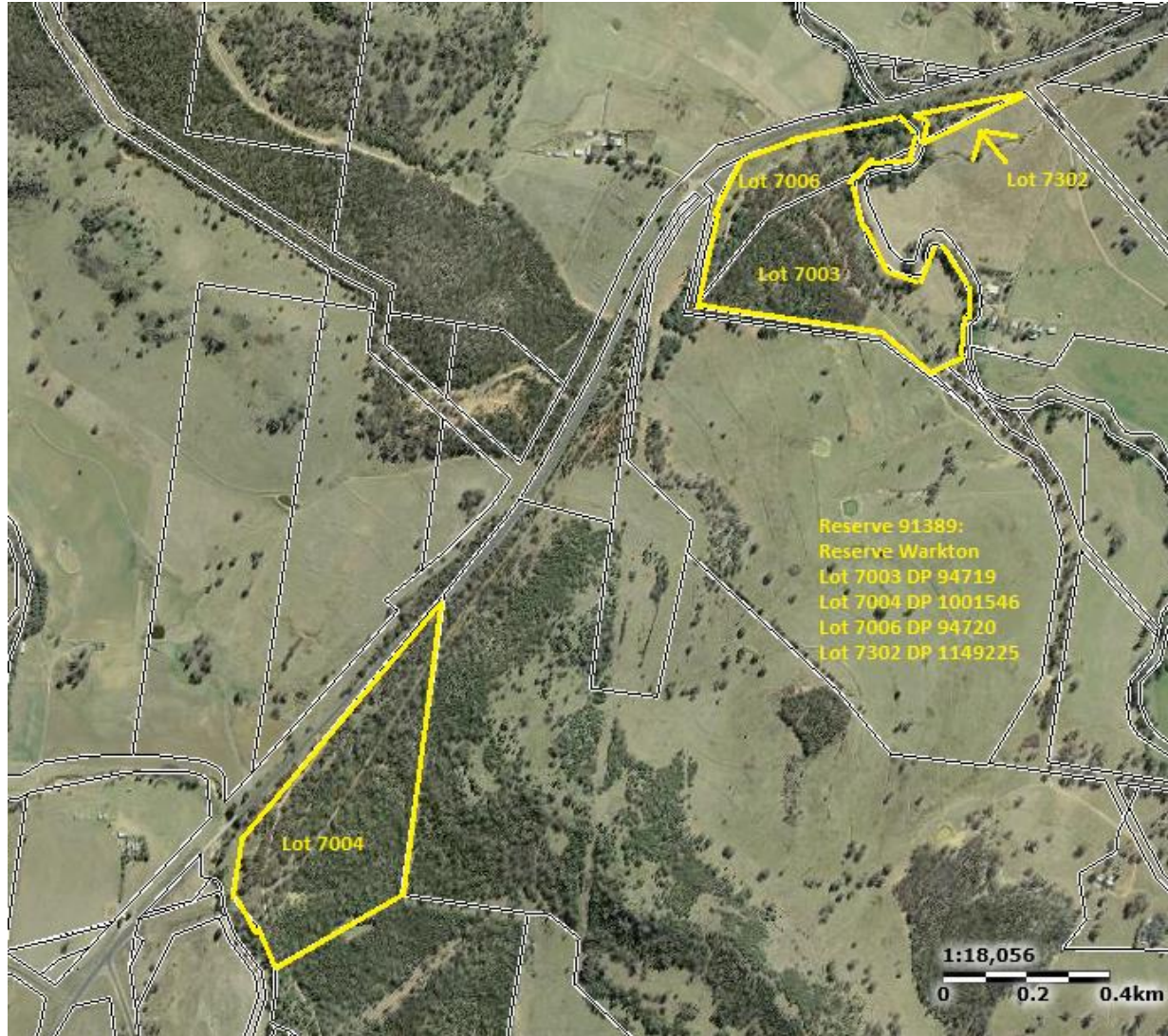
Reserve Map 35. R1997 Reserve Rocky Glen





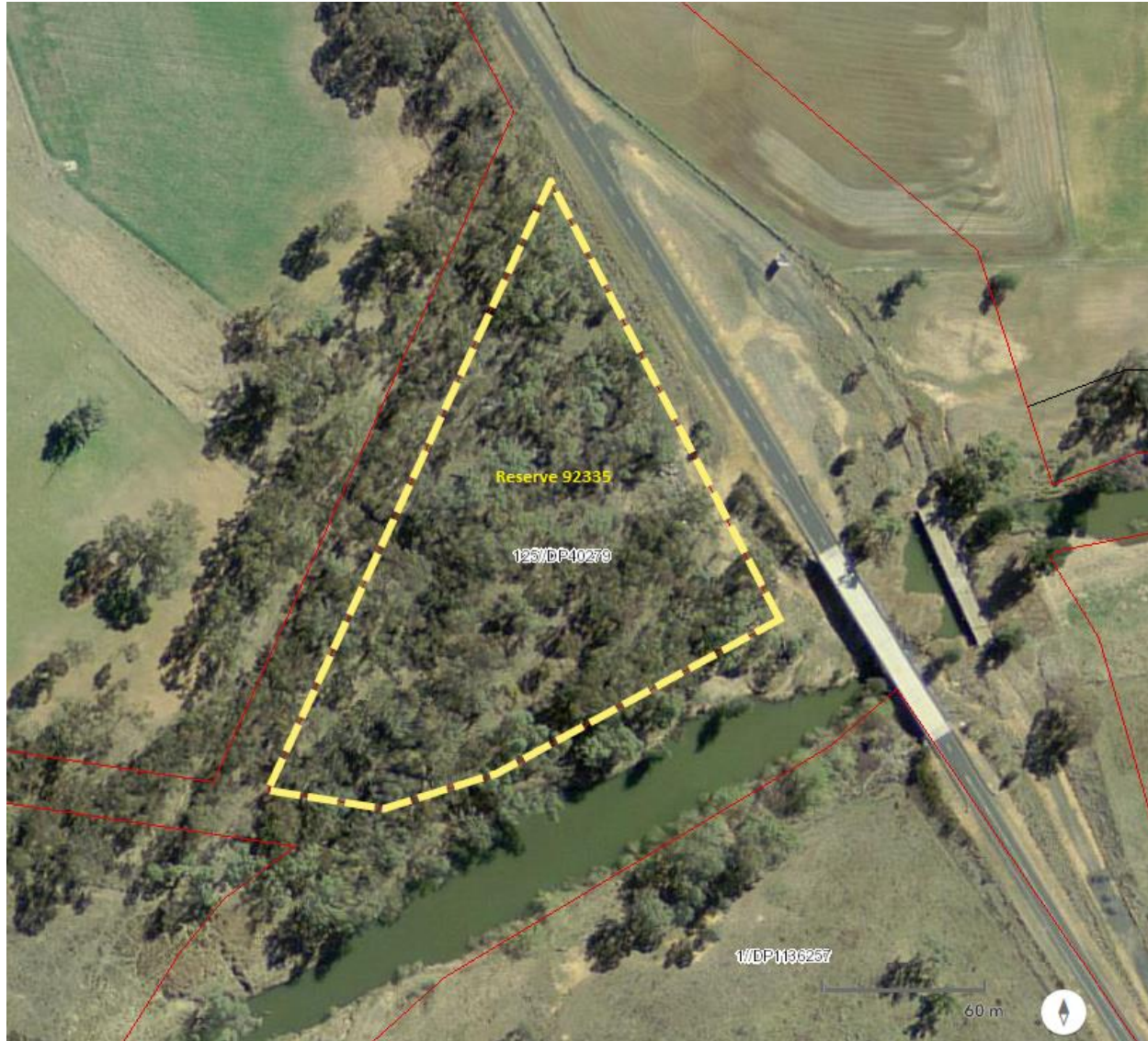
Reserve Map 36. R91389 Reserve Warkton





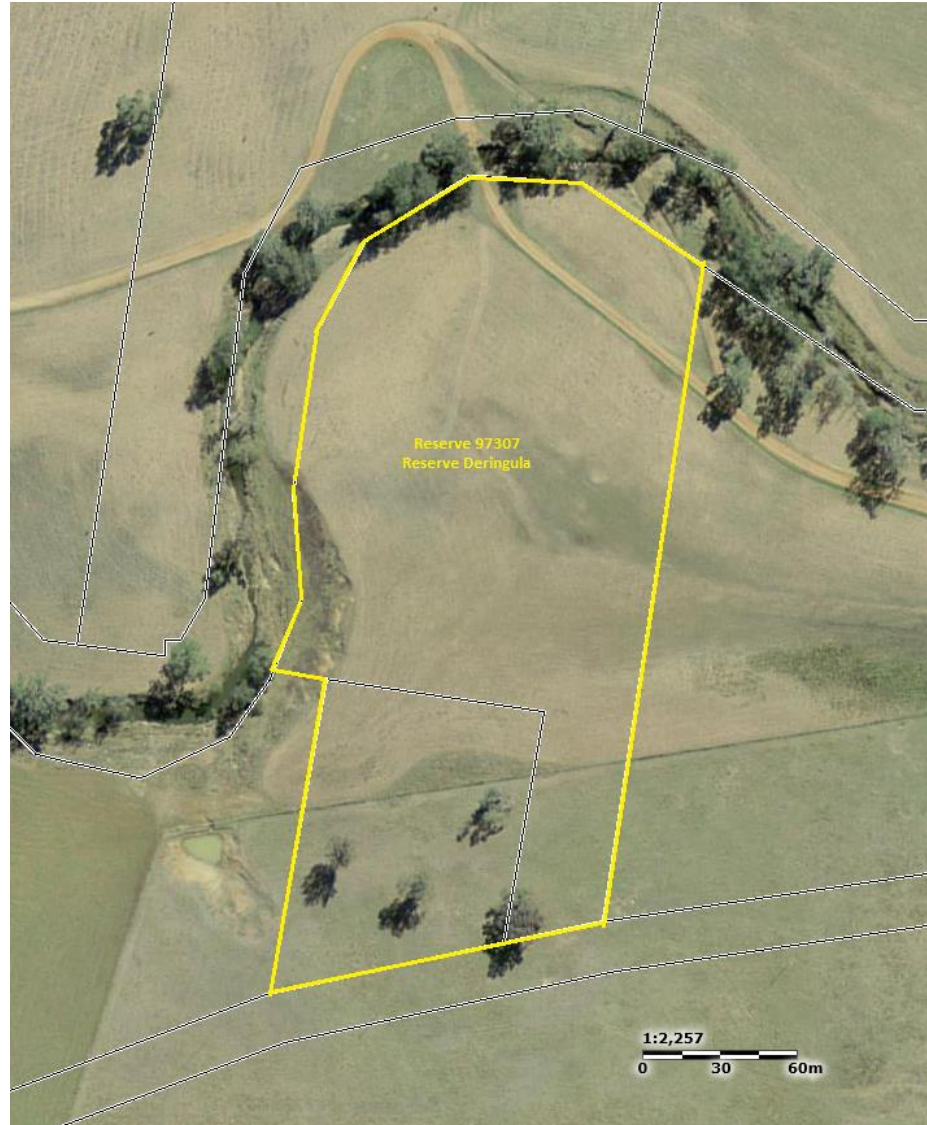
Reserve Map 37. R92335 Reserve Ulamambri





Reserve Map 38. R97307 Reserve Deringula





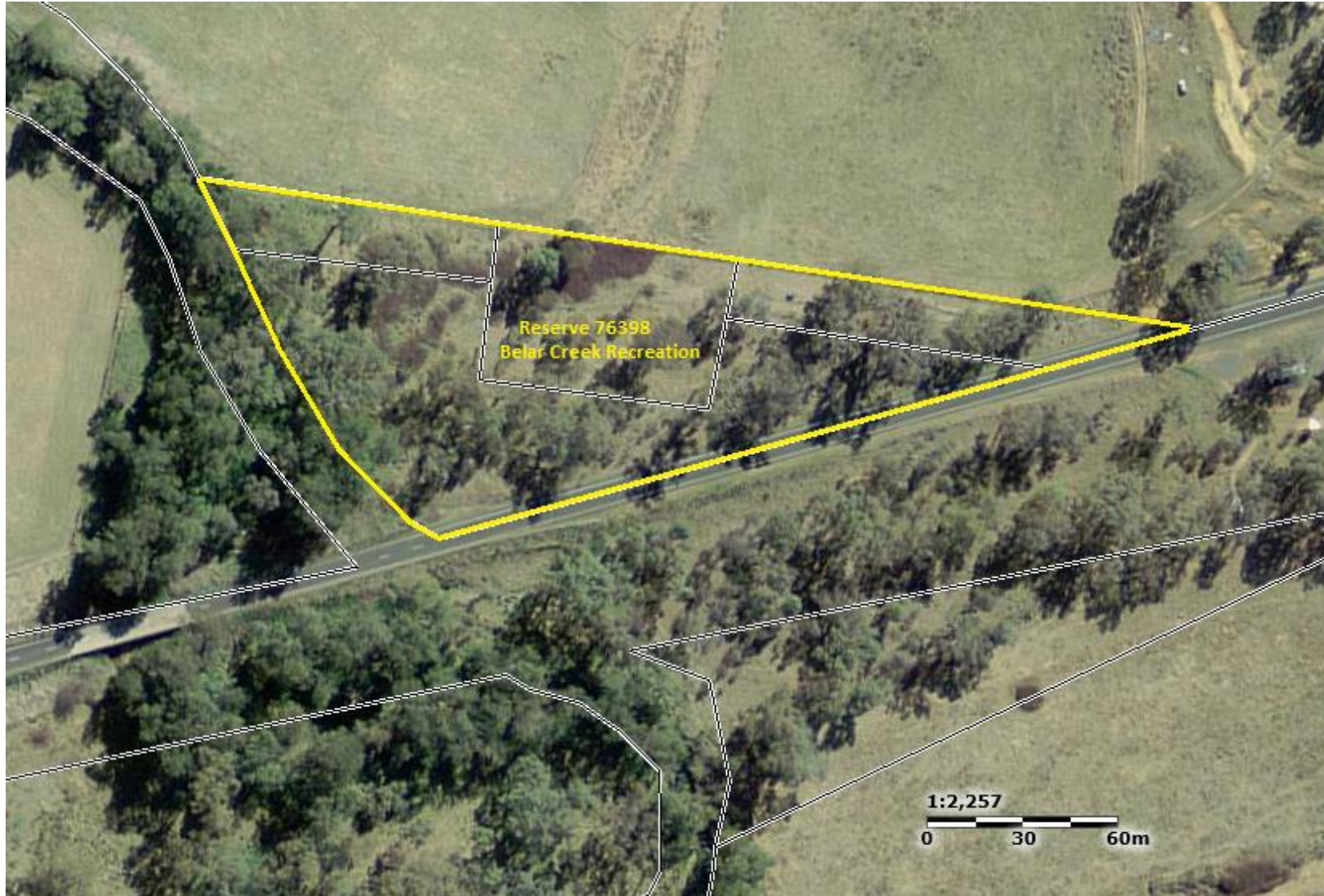
Reserve Map 39. R47862 Chips Reserve





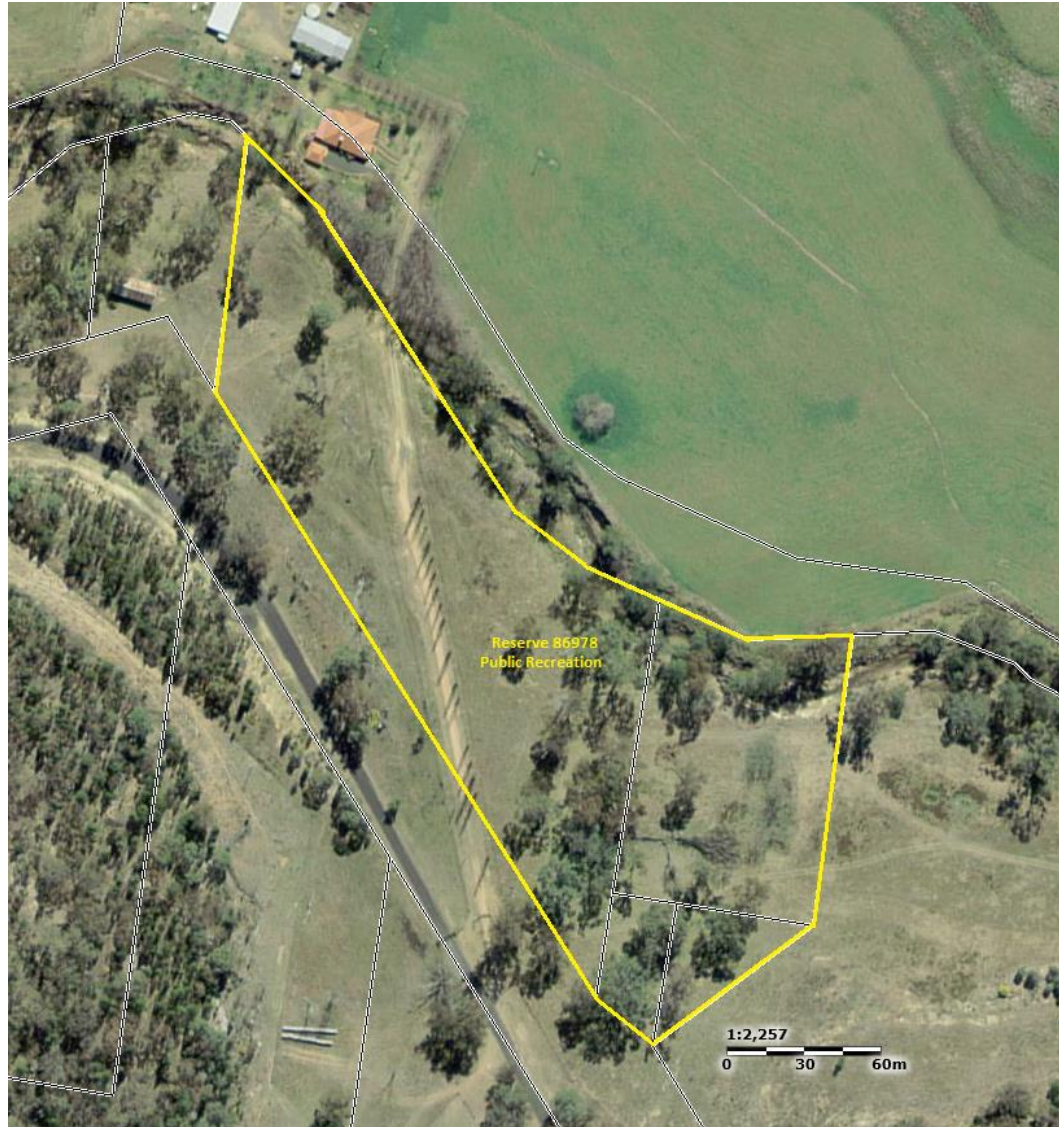
Reserve Map 40. R76398 Belar Creek Recreation





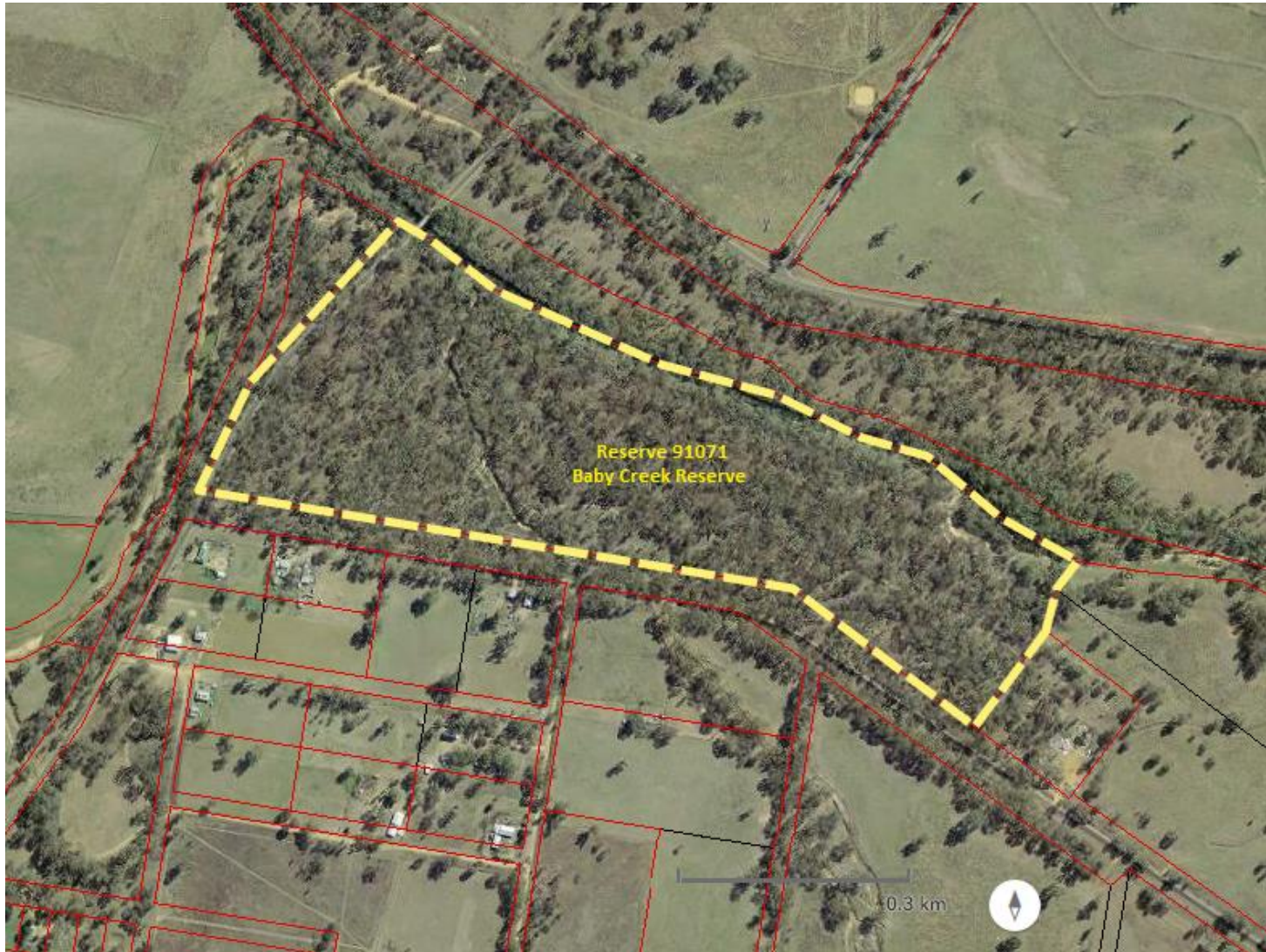
Reserve Map 41. R86978 Public Recreation





Reserve Map 42. R91071 Baby Creek Reserve





Reserve Map 43. R53797 Frog Hollow





Reserve Map 44. R86997 Public Recreation





Reserve Map 45. R68100 Robertson Park





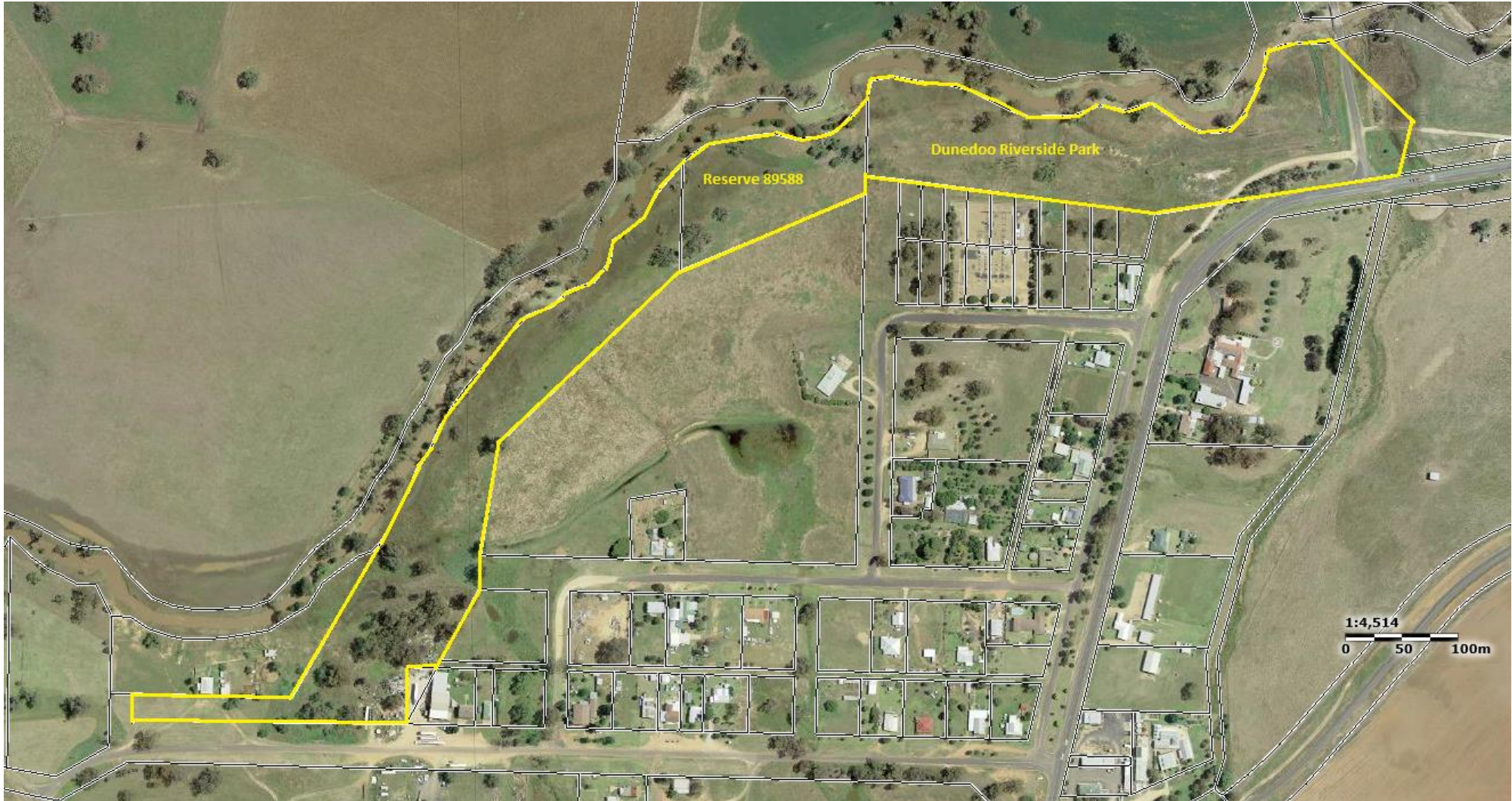
Reserve Map 46. R81962 Dunedoo War Memorial Baths





Reserve Map 47. R89588 Dunedoo Riverside Park





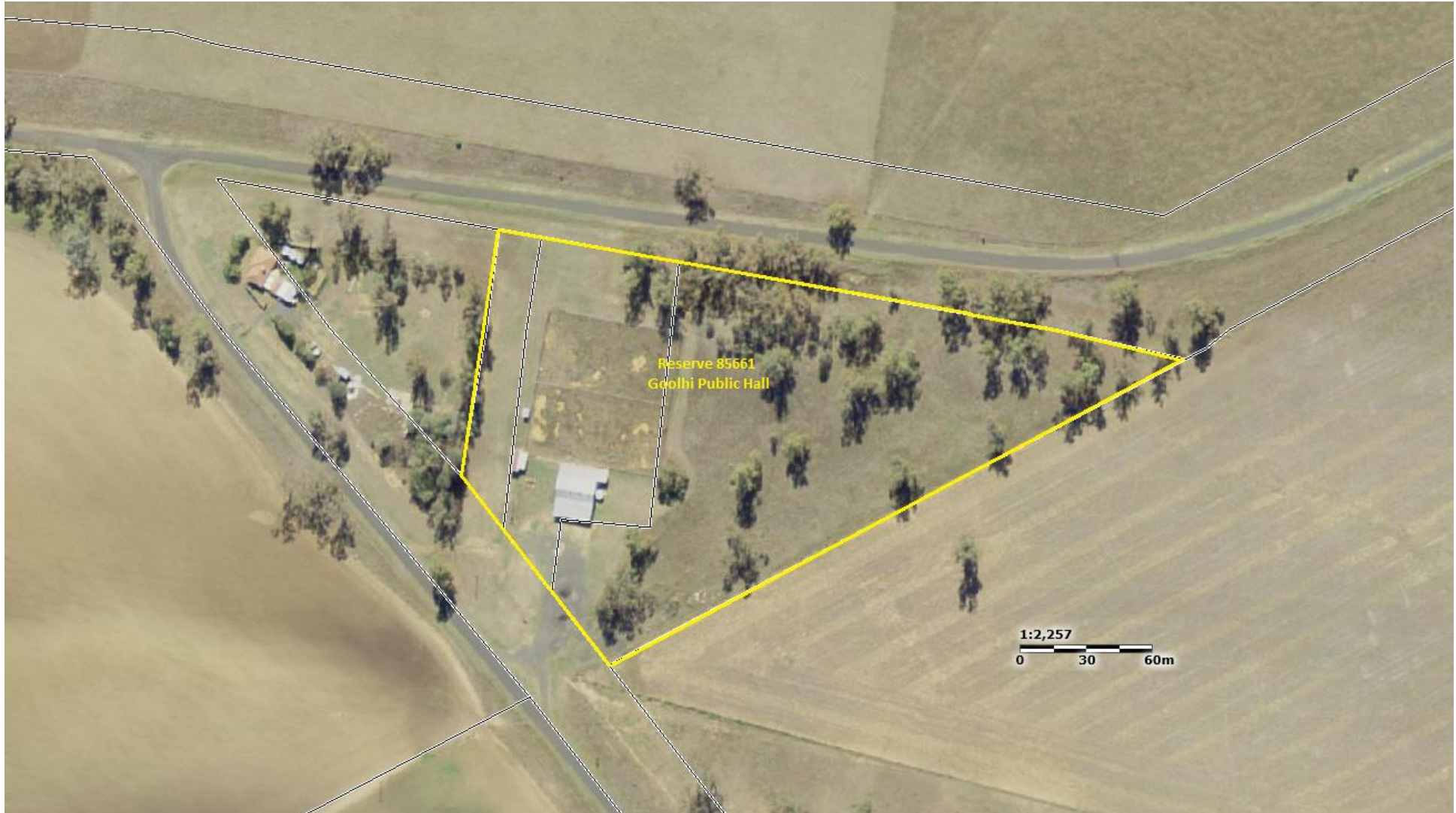
Reserve Map 48. R520049 Jubilee Memorial Hall





Reserve Map 49. R85661 Goolhi Public Hall





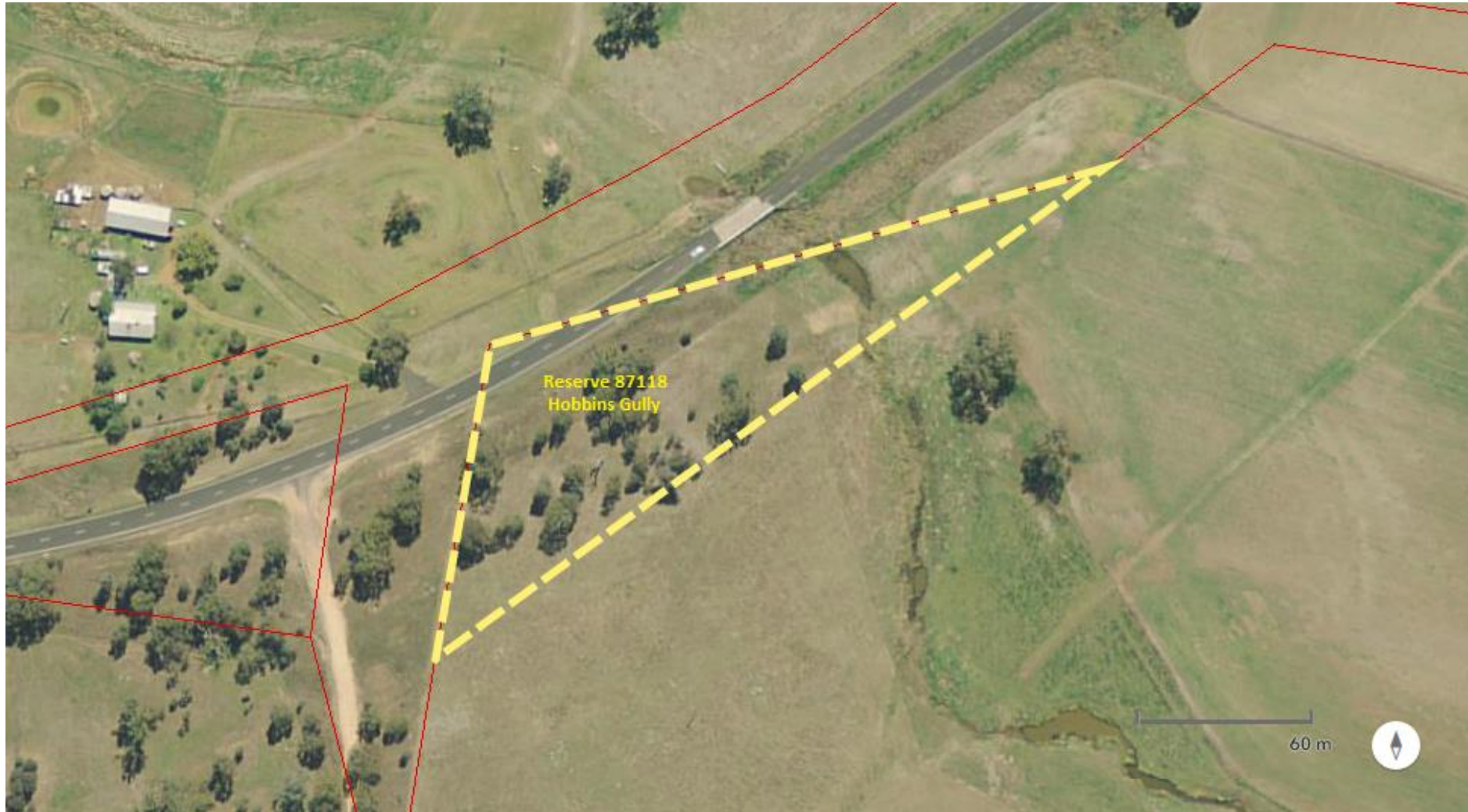
Reserve Map 50. R90681 Reserve Greenbah Creek





Reserve Map 51. R87118 Hobbins Gully





Reserve Map 52. R95872 Talbragar Cemetery Leadville





Reserve Map 53. R98063 Nullen Rest Area





Reserve Map 54. R1591 Mendooran Cricket Oval





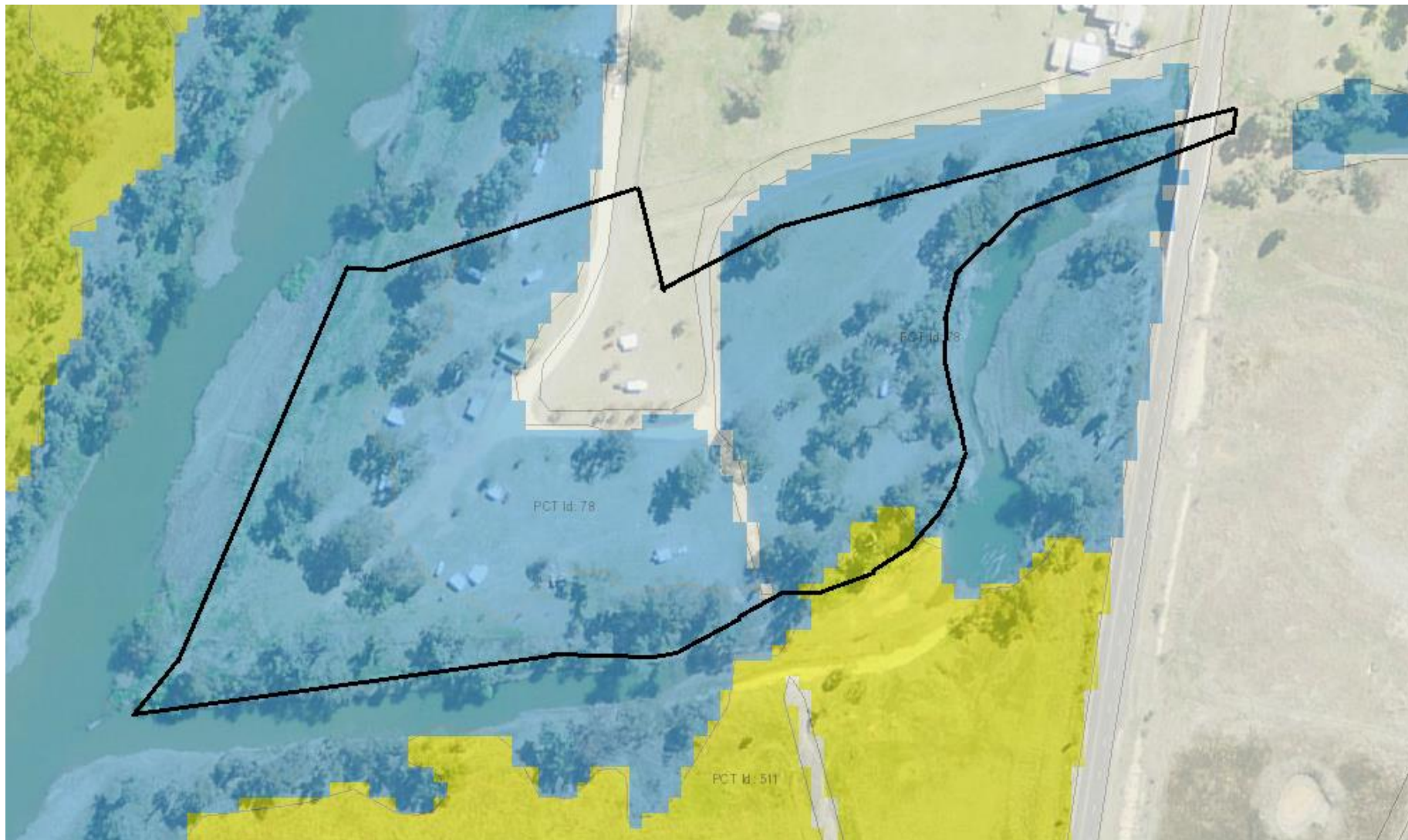
Reserve Map 55. R1592 Brambil Park





Reserve Map 56. R73370 Mendooran Camping Area





Reserve Map 57. R77108 Mendooran Park





Reserve Map 58. R85682 Beni Crossing Resting Place





Reserve Map 59. R69283 Mendooran Night Soil Depot





Reserve Map 60. R69431 Rubbish Depot





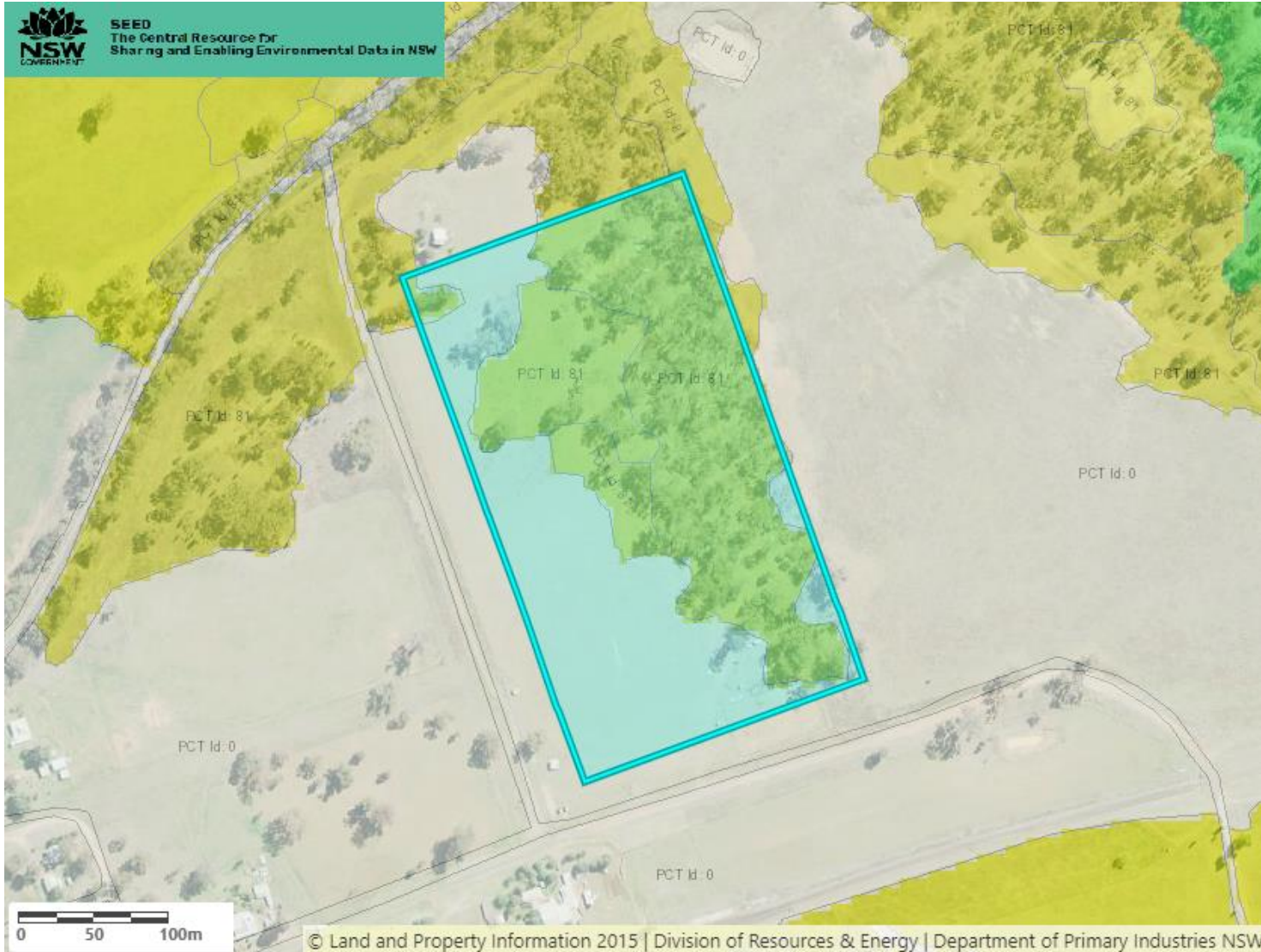
Reserve Map 61. R76877 Merrygoen Park/Tennis Courts





Reserve Map 62. R78473 Public Recreation





Reserve Map 63. R80278 Neilrex Playground





Reserve Map 64. R120081 Uarbry Rubbish Depot





Reserve Map 65. R97167 Public Hall





Reserve Map 66.

R86771 Rubbish Depot





Reserve Map 67. R69528 Rubbish Depot





Reserve Map 68. R1205 Public Recreation





Reserve Map 69. R60139 Sanitary Purposes, Binnaway





Reserve Map 70. R73778 Rubbish Depot, Craboon Village



